



Peppermint
CAFE

OPEN 24 HOURS

AVAILABLE ON 

Open
7 Days
a Week

UNIQUE RECIPES

EGGS

your way
From



Peppermint
CAFE

STEP 1

NUMBER OF EGGS

○ × 1	100/=
○ × 2	200/=
○ × 3	300/=
○ × 4	400/=
○ × 5	500/=



STEP 2

HOW WOULD YOU LIKE
YOUR EGGS ?

- OMELET
- BOILED
- POACHED
- SUNNY SIDE
- SCRAMBLED



STEP 3

LEAFY GREEN SIDES ?

-SPINACH	150/-
-KANG KUNG	150/-



STEP 4

SIDES ?

-SWEET CORN	100/-
-KIDNEY BEANS	100/-
-GREEN PEAS	100/-
-CHICK PEAS	100/-
-GRILLED TOMATO	100/-
-MASHED POTATO	150/-
-CHICKEN HAM	150/-
-CHICKEN BACON	150/-
-BAKED BEANS.....	200/-
-SAUTEED MUSHROOM	200/-
-SAUSAGE	200/-
-CHICKEN POPS.....	250/-
-FRENCH FRIES	250/-
-GARLIC CHICKEN	300/-
-PULLED BEEF	350/-



STEP 5

CARB OPTIONS ?

-BREAD SLICE	50/-
-PARATA	100/-
-WAFFLE	200/-
-CROISSANT	200/-



Thank you!!!
enjoy your meal....



Peppermint
CAFE

EGGS

your way

RECOMMENDATIONS (CUSTOMIZE YOUR CHOICE)

-  POACHED EGGS WITH GREEN SALAD 580/-
-  SUNNY SIDE UP EGGS WITH MIXED BEANS AND GUACAMOLE 620/-
-  OMELET WITH KANG KUNG 660/-
-  SCRAMBLED EGGS WITH GARLIC CHICKEN, KANG KUNG AND GRILLED TOMATOES 760/-
-  BOILED EGGS WITH BREAD, GUACAMOLE AND KANG KUNG 700/-
-  CHEESE AND ONION OMELET WITH BAKED BEANS 800/-
-  OMELET EGGS WITH MUSHROOM AND CHUTNEY SERVED WITH FRENCH BREAD 800/-

Thank you!!!
enjoy your meal....



Open 24 Hours
 Breakfast • Lunch • Dinner • Late Night Fun



Peppermint
 CAFE

BREAKFAST



- 1 **DG** BRUSCHETTA WITH SCRAMBLED EGGS, CHICKEN POPS, MUSHROOM1200/-
- 2 **DG** OATS IN JAR (MANGO, STRAWBERRY AND YOGURT)750/-
- 3 **G** 3 EGGS MADE YOUR WAY SERVED WITH GRILLED SAUSAGES, MUSHROOM SPINACH WITH BREAD1100/-
- 4 **DG** THE COLOSSAL OMELET WITH MUSHROOM (3 EGGS, MUSHROOMS, ONION, BELL PEPPER).....770/-
- 5 **DG** WAFFLES TOAST WITH EGG & MELTED CHEESE WITH CHICKEN HAM IN AN OPEN SANDWICH1150/-
- 6 **G** CALIFORNIA EGG BENEDICT WITH GUACAMOLE AND SAUTÉED SPINACH MUSHROOM.....880/-
- 7 **G** FRESH CROISSANT WITH EGG MAYO.....950/-
- 8 POACHED EGGS WITH SAUTEED SPINACH AND POTATO WEDGES.....880/-
- 9 **D** OATS IN A BOWL.....870/-
- 10 **D** SPINACH OMELET WITH MASHED POTATO AND GRILLED SAUSAGES.....750/-
- 11 **DGN** NUTELLA FRENCH TOAST WITH FRESH STRAWBERRIES.....870/-



3 EGGS MADE YOUR WAY SERVED WITH GRILLED SAUSAGES, MUSHROOM, SPINACH WITH BREAD



WAFFLES TOAST WITH EGG & CHEESE CHICKEN HAM



OATS IN A JAR

Open 24 Hours
 Breakfast • Lunch • Dinner • Late Night Fun



Peppermint
 CAFE

SALADS

- | | | | | | |
|----|--|--------|----|---|--------|
| 12 | N SH SOM TUM PAPAYA SALAD..... | 710/- | 16 | CAESAR SALAD | |
| | | | | DG CHICKEN K | 1100/- |
| 13 | V PEPPERMINT GREEN GARDEN SALAD. K | 950/- | | DGSH PRAWNS K | 1350/- |
| | | | | DG KING FISH K | 1450/- |
| 14 | PULLED BEEF SALAD K | 1130/- | 17 | HAWAIIAN SALAD (WITH CHICK PEAS,
SWEET CORN AND GUACAMOLE) | |
| 15 | G SPICY BAKED CHICKEN WITH ASIAN CUCUMBER SALAD. K | 990/- | | DG TOFU..... | 900/- |
| | | | | DG CHICKEN K | 920/- |



HAWAIIAN SALAD



KING FISH
 CAESAR SALAD



PEPPERMINT
 GREEN
 GARDEN
 SALAD



SOM TUM PAPAYA SALAD



CHICKEN
 CAESAR SALAD



@PEPPERMINTCAFE_SRLANKA



PEPPERMINTCAFE.LK

V Vegetarian **G** Gluten **D** Dairy **N** Nuts **SH** Shell Fish **S** Soy **K** Keto

* ALL PRICES ARE SUBJECT TO A 10% SERVICE CHARGE AND GOVERNMENT TAXES



Peppermint
CAFE

PULLED BEEF

SPECIALS



*Pulled Beef with Jasmine
Rice and Mixed Salad*



Pulled Beef Salad



*Pulled Beef Sandwich
with Fries*

12 p.m. - 3 p.m.

Lunch menu



Tiers of Kang kung & Jasmine rice
chicken - 850
beef - 950



Asian Fusion parata
chicken - 850
beef - 950



Mexican Kidney bean rice
chicken - 850
beef - 950



COMPLIMENTARY SPRITE WITH EVERY LUNCH DISH



Mexican kidney bean burrito
chicken - 850
beef - 950



Open 24 Hours
Breakfast • Lunch • Dinner • Late Night Fun

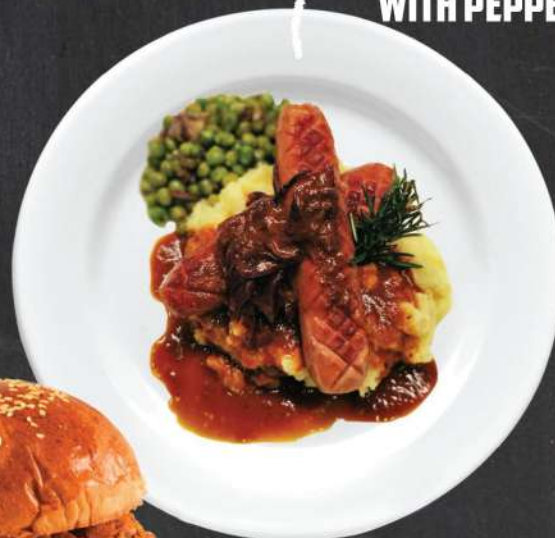


MAINS

FISH AND CHIPS



GRILLED SAUSAGES WITH MASHED POTATO AND GREEN PEAS SERVED WITH PEPPER SAUCE



SPICY PRAWNS WITH CHEESY PASTA



PRAWN & TOFU AVAILABLE



CRISPY CHICKEN BURGER



SPICY GRILLED CHICKEN IN COUS COUS WITH SPINACH, MUSHROOM AND GUACAMOLE

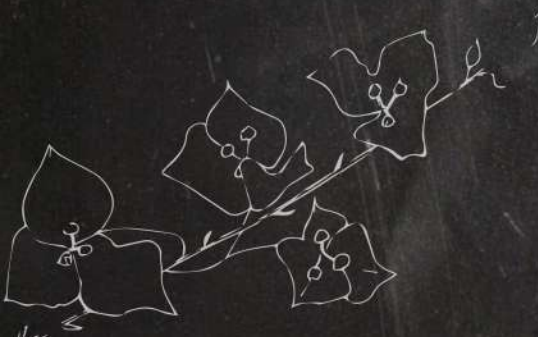


CHICKEN & MUSHROOM AVAILABLE

PRAWNS AND CHIPS



Peppermint
CAFE



Open 24 Hours
 Breakfast Lunch Dinner Late Night Fun



Peppermint
 CAFE

MAINS

- 22 **G** SPICY POTATO WEDGES SERVED WITH OUR SIGNATURE SAUCE790/-
- 23 **DG** CHICAGO FRIES WITH CRISPY CHICKEN AND CHEESE SAUCE1000/-
- 24 **G** GARLIC CHICKEN WINGS **K** 870/-
- 25 **SH** SAUTEED GARLIC PRAWNS WITH TAMARIND SAUCE1200/-
- 26 **DG** FISH AND CHIPS1270/-
- 27 **DGSH** PRAWN AND CHIPS1400/-
- 28 **DG** FRESH CROISSANT WITH SLICED CHEESE & CHICKEN BACON (NO PORK) 950/-
- 29 **G** GARLIC CHICKEN WITH SAUTÉED KANG KUNG AND GUACAMOLE **K**880/-
- 30 **G** GRILLED SAUSAGES WITH MASHED POTATO AND GREEN PEAS SERVED WITH PEPPER SAUCE **K**950/-
- 31 **G** CRISPY CHICKEN WINGS 950/-
- 32 **G** SPICEST FRIED CHICKEN WITH FRIES1250/-
- 33 **G** PULLED BEEF SANDWICH1200/-
- 34 **G** CRISPY CHICKEN HOT DOG1350/-
- 35 **DGN** LIKE BUTTER CHICKEN WITH PARATA 900/-
- 36 **DGNV** LIKE BUTTER PANEER WITH PARATA950/-
- 37 **DGSH** LIKE BUTTER PRAWNS WITH PARATA1450/-

V Vegetarian **G** Gluten **D** Dairy **N** Nuts **SH** Shell Fish **S** Soy **K** Keto
 * ALL PRICES ARE SUBJECT TO A 10% SERVICE CHARGE AND GOVERNMENT TAXES

Open 24 Hours
Breakfast • Lunch • Dinner • Late Night Fun

Star of the Show

CHILLI CHEESE FRIES



Peppermint
CAFE

Open 24 Hours
Breakfast • Lunch • Dinner • Late Night Fun



Peppermint
CAFE

MAINS

- 38 CHEESY PASTA
- DG** MUSHROOM1150/-
 - DGSH** SPICY CHICKEN1210/-
 - DG** SPICY PRAWN1450/-
- 39 CHICKEN CHILI DOG WITH FRIES
- DG** MUSHROOM **K**1050/-
 - DG** CHICKEN **K**1100/-
 - DG** BEEF **K**1150/-
- 40 HOT CHILI CHEESE FRIES
- DGV** MUSHROOM850/-
 - DG** CHICKEN850/-
 - DGSH** PRAWN950/-
 - DG** MINCED BEEF950/-
- 41 CLUB SANDWICH
- DGV** VEGETARIAN1100/-
(GUACAMOLE, CHEESE, TOMATO, CUCUMBER, LETTUCE, GRILLED ZUCHHCINI)
 - DG** CHICKEN1200/-
(MARINATED COUNTRY CHICKEN WITH EGG)
- 42 COUS COUS (WITH SPINACH, MUSHROOM AND GUACAMOLE)
- DGV** TOFU900/-
 - DG** CHICKEN1060/-
 - DGSH** PRAWN1650/-
- 43 BURGER
- DGNV** VEGETARIAN1150/-
(WITH OPTIONAL CUCUMBER FRIES)
 - DG** CHICKEN1450/-
 - DG** BEEF1550/-
- 44 TORTILLA WRAP WITH FRIES
- DG** VEGETARIAN900/-
 - CHICKEN950/-
 - PRAWN1350/-
- 45 JASMINE RICE WITH MIXED SALAD
- DG** PULLED BEEF1200/-
 - DG** KING FISH1250/-
 - DGSH** DEVILLED PRAWNS1450/-



@PEPPERMINTCAFE_SRILANKA



PEPPERMINTCAFE.LK

V Vegetarian **G** Gluten **D** Dairy **N** Nuts **SH** Shell Fish **S** Soy **K** Keto

* ALL PRICES ARE SUBJECT TO A 10% SERVICE CHARGE AND GOVERNMENT TAXES

Open 24 Hours
 Breakfast • Lunch • Dinner • Late Night Fun



Peppermint
 CAFE

DESSERTS

- 46 **G** THE INCOMPARABLE PAN CAKE
 (4 LAYERS OF SOFT PAN CAKE WITH LOADS OF CHOCOLATE SAUCE, WHIPPED CREAM & STRAWBERRIES).....1490/-
- 47 **DG** WAFFLE WITH ICE CREAM, CHOCOLATE SAUCE AND BANANA.....780/-
- 48 WAFFLE STICKS WITH CHOCOLATE SAUCE.....700/-
- 49 STACKED PANCAKES WITH NUTELLA, BANANA AND FRESH STRAWBERRIES.....850/-
- 50 **DG** FRESH CROISSANT WITH VANILLA ICE CREAM AND CARAMEL SAUCE.....780/-
- 51 **DG** TEMPURA FRIED BANANA WITH ICE CREAM.....700/-
- 52 **DN** INDULGENT FRIES WITH CHOCOLATE AND CARAMEL SAUCE WITH ICE CREAM.....900/-
- 53 FRESH CROISSANT WITH CHOCOLATE ICE CREAM AND CHOCOLATE CHIPS.....780/-

CHOOSE YOUR SLICE OF CAKE AT OUR COUNTER

THE INCOMPARABLE PANCAKE

WAFFLES WITH ICE CREAM, CHOCOLATE SAUCE AND BANANA



Dessert Add - Ons
 Ice Cream Scoop - 200/-
 Chocolate Sauce - 60/-



INDULGENT FRIES WITH CHOCOLATE AND CARAMEL SAUCE WITH ICE CREAM

STACKED PANCAKES WITH NUTELLA, BANANA AND FRESH STRAWBERRIES

FRESH CROISSANT WITH VANILLA ICE CREAM AND CARAMEL SAUCE

@PEPPERMINTCAFE_SRILANKA

PEPPERMINTCAFE.LK

V Vegetarian **G** Gluten **D** Dairy **N** Nuts **SH** Shell Fish **S** Soy **K** Keto

* ALL PRICES ARE SUBJECT TO A 10% SERVICE CHARGE AND GOVERNMENT TAXES

Open 24 Hours
 Breakfast • Lunch • Dinner • Late Night Fun



Peppermint
 CAFE

COFFEE

Hot

Cold

54 ESPRESSO.....	350/-	67 ICE CAPPUCCINO.....	540/-
55 DOUBLE ESPRESSO.....	400/-	68 LATTE ICE MACCHIATO.....	560/-
56 AMERICANO.....	530/-	69 ICE CAFE LATTE.....	560/-
57 LUNGO.....	480/-	70 ICE AMERICANO.....	530/-
58 CAPPUCCINO.....	540/-	71 CINNAMON ICED COFFEE.....	560/-
59 CAFÉ LATTE.....	490/-	72 COFFEE FLOAT.....	490/-
60 LATTE MACCHIATO.....	490/-	73 ICE CAFE MOCHA.....	560/-
61 CAFE MOCHA.....	490/-	74 FLAVOR ADD ON.....	100/-
62 BULLET PROOF COFFEE.....	380/-	(CINNAMON, VANILLA, CARAMEL, HAZELNUT)	
63 HOT CHOCOLATE.....	650/-	75 COKE FLOAT.....	520/-
64 HOT MILO.....	650/-	76 DALGONA COFFEE.....	490/-
65 MEMON CHAA.....	350/-		
66 CHOOSE YOUR CUPPA TEA.....	300/-		



**DOUBLE
 ESPRESSO**



ICE AMERICANO



HOT CAPPUCCINO



HOT CHOCOLATE



COFFEE FLOAT



@PEPPERMINTCAFE_SRILANKA



PEPPERMINTCAFE.LK

* ALL PRICES ARE SUBJECT TO A 10% SERVICE CHARGE AND GOVERNMENT TAXES

Open 24 Hours
 Breakfast • Lunch • Dinner • Late Night Fun



Peppermint
 CAFE

MILK SHAKES

Freak Shake

- 77 STRAWBERRY MONSTER BOMB 1250/-
- 78 CHOCO MONSTER BOMB..... 1450/-

Shakes

- 79 VANILLA SHAKE 590/-
- 80 BROWNIE SHAKE 870/-
- 81 OREO SHAKE 800/-
- 82 MILO DINO..... 690/-
- 83 CEREAL SHAKE 690/-

CHOOSE YOUR OWN SHAKE
 900/-

(TOBLERONE, KITKAT, TWIX, MARS, SNICKERS)



STRAWBERRY
 MONSTER BOMB



CHOCO MONSTER
 BOMB



OREO SHAKE



MILO DINO

@PEPPERMINTCAFE_SRILANKA

PEPPERMINTCAFE.LK

* ALL PRICES ARE SUBJECT TO A 10% SERVICE CHARGE AND GOVERNMENT TAXES

Open 24 Hours
Breakfast • Lunch • Dinner • Late Night Fun



Peppermint
CAFE

FRESH JUICES AND SMOOTHIES

Smoothies

84 AVOCADO AND BEETROOT.....	570/-
85 MANGO AND BANANA.....	580/-
86 CARROT AND APPLE.....	620/-
87 STRAWBERRY AND BANANA.....	600/-
88 PINEAPPLE AND STRAWBERRY.....	610/-
89 MANGO AND STRAWBERRY.....	620/-
90 CHOCOLATE AND BANANA.....	630/-

Fresh Juices

100% ORGANIC AND NATURAL FRUITS
AND NO ARTIFICIAL INGREDIENTS ADDED

91 AVOCADO.....	550/-
92 APPLE.....	570/-
93 PINEAPPLE.....	610/-
94 MANGO.....	670/-
95 LIME.....	690/-
96 ORANGE (5 FRESH SOUTH AFRICAN ORANGES).....	840/-



ORANGE JUICE



MANGO & STRAWBERRY



LIME JUICE



STRAWBERRY &
BANANA

 @PEPPERMINTCAFE_SRI LANKA

 PEPPERMINTCAFE.LK

* ALL PRICES ARE SUBJECT TO A 10% SERVICE CHARGE AND GOVERNMENT TAXES

BEVERAGES



OREO FRAPPE



WILD CHILD



LIME & MINT MOJITO

BLUE CURACAO MOJITO



CHOCO MILK



ORIGINAL ICED TEA



Peppermint
CAFE



Open 24 Hours
Breakfast • Lunch • Dinner • Late Night Fun



Peppermint
CAFE

BEVERAGES

Frappe

97 MILO FRAPPE.....	690/-
98 HAZELNUT FRAPPE.....	710/-
99 VANILLA FRAPPE.....	710/-
100 CARAMEL FRAPPE.....	730/-
101 OREO FRAPPE.....	820/-

Mojito

104 WILD CHILD.....	350/-
105 BLUE CURACAO.....	590/-
106 BLACK CURRENT.....	590/-
107 STRAWBERRY & GUAVA.....	590/-
108 LIME & MINT.....	600/-
109 ORANGE.....	770/-
110 BULL WIINGS.....	880/-

Affogatos

102 CHOCO MILK.....	560/-
103 VANILLA MILK.....	570/-

Iced Tea

111 ORIGINAL.....	350/-
112 LIME AND LEMON.....	350/-
113 GRAPE.....	350/-



@PEPPERMINTCAFE_SRILANKA



PEPPERMINTCAFE.LK

* ALL PRICES ARE SUBJECT TO A 10% SERVICE CHARGE AND GOVERNMENT TAXES