



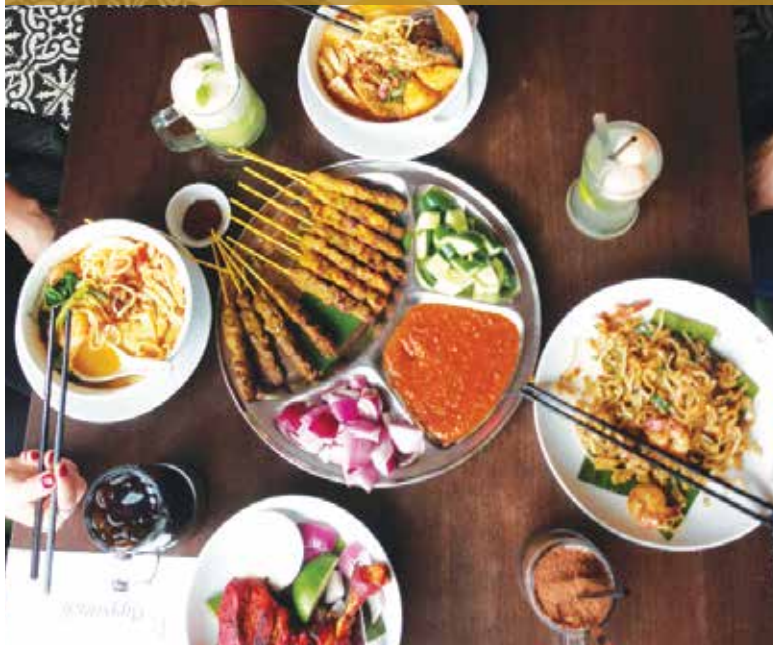
PappaRich
MALAYSIAN DELIGHTS

 papparich.net.au

 PappaRichAus

 #PappaRichAus #lovepapparich

Allergen Information



New South Wales Bankstown • Broadway • Chatswood • Parramatta • Macquarie

Victoria CBD (QV) • Chadstone • Doncaster Glen • Waverley • Knox City • Nunawading • Northland

Western Australia Carousel • Joondalup • Northbridge

Australian Capital Territory
Canberra City Centre

Queensland
Brisbane

South Australia
Adelaide

Northern Territory
Casuarina (Coming Soon)

Allergen Information

We, at PappaRich are passionate about our customers and the food you consume. This is why we have compiled this allergen list. In this brochure, is a complete list of the food items on our menu and their suitability for consumption by individuals with special dietary requirements. We hope this brochure helps you to continue enjoying your meals at PappaRich with **minimal** exposure to allergens.

- Suitable
- ✗ Unsuitable
- ★ Modification possible, enquire within.
- ! Trace amounts

ROTI CANAI

DF GF VEG V NF EF



		DF	GF	VEG	V	NF	EF
		▼	▼	▼	▼	▼	▼
C01	Roti Canai	×	×	●	×	●	●
C02	Roti Canai with Curry Chicken	×	×	×	×	●	●
C14	Roti Canai with Veg. Curry Mutton	×	×	●	×	●	×
E24	Roti Canai only	×	×	●	×	●	●
C03	Roti Canai with Tandoori Chicken	×	×	×	×	●	●
C04	Roti Telur	×	×	●	×	●	×
C05	Roti Telur with Curry Chicken	×	×	×	×	●	×
C06	Roti Bom	×	×	●	×	●	●
C07	Roti Planta	×	×	●	×	●	●
C08	Roti Kaya	×	×	●	×	●	×
C09	Roti Telur Bawang	×	×	●	×	●	×
C10	Roti Telur Bawang with Curry Chicken	×	×	×	×	●	×
C11	Roti Canai with Beef Rendang	×	×	×	×	×	●
C12	Roti Telur with Beef Rendang	×	×	×	×	×	×
C13	Roti Telur Bawang with Beef Rendang	×	×	×	×	×	×
C15	Roti Banana and Vanilla Ice Cream	×	×	●	×	●	●
C16	Roti Banana and Premium Ice Cream [Green Tea / Black Sesame]	×	×	●	×	★	●
E01	Curry Chicken	●	●	×	×	●	●
E02	Dhal	●	●	●	×	●	●
E04	Curry Sauce	×	●	●	×	●	●
E25	Vegetarian Sambal	●	●	●	×	●	●
E32	Raita	×	●	●	×	●	●

BREAD



		DF	GF	VEG	V	NF	EF
		▼	▼	▼	▼	▼	▼
B01	Hainan Steamed Bread with Butter & Kaya	★	×	●	×	●	×
B02	Hainan Toasted Bread with Butter & Kaya	★	×	●	×	●	×
B03	Hainan Steamed Bread with Curry Chicken	●	×	×	×	●	●
B04	Hainan Toasted Bread with Condensed Milk	×	×	●	×	●	●
B05	Hainan Toasted Bread with Peanut Butter	×	×	●	×	×	×
B07	2 Half-Boiled Eggs with Hainan Steamed Bread & Butter	×	×	●	×	●	×
B08	2 Half-Boiled Eggs with Hainan Toasted Bread & Butter	★	×	●	×	●	×
B09	Hainan Steamed Bread with Butter & Sugar	×	×	●	×	●	●
B10	Hainan Toasted Bread with Butter & Sugar	×	×	●	×	●	●
B11	Pappa French Toast with Butter	×	×	●	×	●	×
B12	2 Half-Boiled Eggs	●	★	●	×	●	×
B13	Pappa Garlic Naan with Curry Sauce	×	×	●	×	●	●
B14	Pappa Garlic Naan with Curry Chicken	×	×	×	×	●	●
B15	Steamed Mantau with Curry Chicken	●	×	★	★	●	●
B16	Steamed Mantau with Kaya	★	×	●	★	●	★
B17	Steamed Mantau Only	●	×	●	●	●	●
E06	Kaya	●	●	●	×	●	×
E07	Butter	×	●	●	×	●	●

NOODLES

DF GF VEG V NF EF



N01 Curry Laksa (Chicken)

✗ ✗ ✗ ✗ ● ●

N02 Curry Laksa (Vegetables)

✗ ✗ ✗ ✗ ● ●

N03 Curry Laksa (Seafood)

✗ ✗ ✗ ✗ ● ●

N04 Pappa Char Koay Teow

● ✗ ✗ ✗ ● ★

N06 Pappa Fried Mee

✗ ✗ ✗ ✗ ✗ ✗

N07 Pappa Asam Laksa

● ★ ✗ ✗ ● ●

N08 Pappa Prawn Mee

✗ ★ ✗ ✗ ● ★

N09 Ipoh Koay Teow with Steamed Chicken

● ✗ ✗ ✗ ● ●

N10 Dry Koay Teow with Steamed Chicken

● ✗ ✗ ✗ ● ●

N11 Dry Curry Egg Noodle with Steamed Chicken

● ✗ ✗ ✗ ● ✗

N12 Ipoh Koay Teow Soup with Prawns & Chicken Slices

● ✗ ✗ ✗ ● ●

N13 Pappa Wat Tan Hor

✗ ✗ ✗ ✗ ● ✗

N14 Crispy Egg Noodle

✗ ✗ ✗ ✗ ● ✗

N15 Dry Curry Egg Noodles with Curry Chicken

● ✗ ✗ ✗ ● ✗

N16 Chilli Pan Mee

✗ ✗ ✗ ✗ ★ ★

N17 Pappa Fried Noodles

● ✗ ✗ ✗ ● ★

N18 Pappa Pan Mee Soup

✗ ✗ ✗ ✗ ★ ★

E08 Chilli Pan Mee Chilli Paste

● ✗ ✗ ✗ ✗ ✗

E33 Pan Mee Soup Chilli

● ● ✗ ✗ ● ●

F01 Fish Head Noodles Soup

✗ ✗ ✗ ✗ ✗ ✗

F02 Fish Fillet Noodles Soup

✗ ✗ ✗ ✗ ✗ ✗



Noodles Continued

		DF ▼	GF ▼	VEG ▼	V ▼	NF ▼	EF ▼
F03	Curry Fish Head Noodles Soup	✗	✗	✗	✗	✗	✗
F04	Curry Fish Fillet Noodles Soup	✗	✗	✗	✗	✗	✗

SATAY



		DF ▼	GF ▼	VEG ▼	V ▼	NF ▼	EF ▼
ST01	Satay Chicken	●	●	✗	✗	✗	●
ST03	Satay Beef	●	●	✗	✗	✗	●
ST05	Satay Mixed (Chicken & Beef)	●	●	✗	✗	✗	●
E05	Peanut Sauce	●	●	●	✗	✗	●

SNACKS



		DF ▼	GF ▼	VEG ▼	V ▼	NF ▼	EF ▼
S01	Pappa Fried Chicken Wings	●	✗	✗	✗	✗	●
S02	Pappa Deep Fried Chicken Skin	●	✗	✗	✗	●	●
S03	Chips with Nuggets	●	✗	✗	✗	●	★
S04	Chips	●	●	●	★	●	★
S05	Tandoori Chicken	✗	●	✗	✗	●	●

DIM SUM



		DF ▼	GF ▼	VEG ▼	V ▼	NF ▼	EF ▼
D01	Vegetarian Shui Kau	●	✗	●	●	✗	●
D03	Vegetarian Fu Chook Rolls	●	●	●	●	✗	●
D05	Prawns Dumplings	●	✗	✗	✗	✗	✗
D06	Chicken Dumplings	●	✗	✗	✗	✗	✗

RICE

DF GF VEG V NF EF
 ▼ ▼ ▼ ▼ ▼ ▼



R01 Pappa Chicken Rice with Steamed Chicken

R02 Pappa Special Nasi Goreng with Fried Chicken

✗ ★ ✗ ✗ ● ✗

● ✗ ✗ ✗ ★ ★



R03 Nasi Goreng

R04 Chicken Congee with Steamed Chicken

R20 Chicken Congee with Half-Boiled Egg & Chicken Slices

● ✗ ✗ ✗ ★ ★

✗ ✗ ✗ ✗ ✗ ✗

✗ ✗ ✗ ✗ ★ ✗



R05 Pappa Special Nasi Lemak with Curry Chicken & Sambal Prawns

R06 Nasi Lemak with Fried Chicken

R07 Nasi Lemak with Curry Chicken

● ● ✗ ✗ ★ ★

● ● ✗ ✗ ★ ★

● ● ✗ ✗ ★ ★



R08 Pappa Special Biryani Rice with Sambal Eggplant, Fried Chicken & Sambal Prawns

✗ ★ ✗ ✗ ★ ●

R09 Pappa Special Jasmine Rice with Sambal Eggplant, Fried Chicken & Sambal Prawns

● ★ ✗ ✗ ★ ●

R10 Biryani Rice with Red Chicken & Sambal Eggplant

✗ ★ ✗ ✗ ★ ●

R11 Jasmine Rice with Red Chicken & Sambal Eggplant

● ★ ✗ ✗ ★ ●

R12 Biryani Rice with Red Chicken & Sambal Prawns

✗ ★ ✗ ✗ ★ ●

R13 Jasmine Rice with Red Chicken & Sambal Prawns

● ★ ✗ ✗ ★ ●

R14 Biryani Rice with Curry Chicken & Sambal Prawns

✗ ★ ✗ ✗ ★ ●

Rice Continued

DF GF VEG V NF EF
 ▼ ▼ ▼ ▼ ▼ ▼



R15 Jasmine Rice with Curry Chicken & Sambal Prawns

● ★ ✕ ✕ ★ ●

R16 Nasi Lemak with Beef Rendang

● ✕ ✕ ✕ ✕ ★

R17 Biryani Rice with Beef Rendang & Sambal Prawns

★ ✕ ✕ ✕ ✕ ●

R18 Biryani Rice with Beef Rendang & Sambal Eggplant

★ ✕ ✕ ✕ ✕ ●

R19 Biryani Rice with Beef Rendang & Fried Chicken

★ ✕ ✕ ✕ ✕ ●

E01 Curry Chicken

● ● ✕ ✕ ● ●

E03 Sambal Anchovies

● ● ✕ ✕ ● ●

E09 Fried Chicken

● ● ✕ ✕ ● ●

E10 Steamed Chicken

● ★ ✕ ✕ ● ●

E11 Fried Egg

● ● ● ✕ ● ✕

E12 Jasmine Rice (Rice only)

● ● ● ● ● ●

E13 Biryani Rice (Rice only)

✕ ● ● ✕ ● ●

E14 Chicken Rice (Rice only)

✕ ● ✕ ✕ ● ●

E15 Nasi Lemak (Rice only)

● ● ● ● ● ●

E16 Red Chicken

● ● ✕ ✕ ● ●

E17 Sambal Prawns

● ● ✕ ✕ ● ●

E18 Sambal Eggplant

● ● ✕ ✕ ● ●

E19 Bean Sprouts

● ★ ● ★ ● ●

E20 Anchovies & Nuts

● ● ✕ ✕ ✕ ●

E22 Pappadam

● ✕ ✕ ✕ ✕ ●



E30 Beef Rendang

● ✕ ✕ ✕ ✕ ●

CHICKEN CHOP

		DF	GF	VEG	V	NF	EF
		▼	▼	▼	▼	▼	▼
W01	Oriental Chicken Chop	✗	✗	✗	✗	✗	✗
W02	Hainan Curry Chicken Chop	●	✗	✗	✗	●	★

VEGETARIAN

		DF	GF	VEG	V	NF	EF
		▼	▼	▼	▼	▼	▼
	V01 Biryani Rice with Vegetarian Curry Mutton	✗	★	●	✗	★	●
	V02 Nasi Lemak with Vegetarian Curry Mutton (with egg)	●	●	●	✗	★	✗
	V10 Nasi Lemak with Vegetarian Curry Mutton (without egg)	●	●	●	✗	★	●
	V05 Vegetarian Fried Mee Hoon with Curry Mutton & Shredded Eggs	●	✗	●	✗	●	✗
	V11 Vegetarian Fried Mee Hoon with Curry Mutton (without egg)	●	✗	●	✗	●	●
	V06 Vegetarian Char Koay Teow with Egg	●	✗	●	✗	●	✗
	V12 Vegetarian Char Koay Teow (without egg)	●	✗	●	✗	●	●
	V07 Vegetarian Sweet & Sour Chicken w/ Rice	●	✗	●	✗	●	●
	V09 Vegetarian Fried Rice (WA only)	●	✗	●	★	●	★
	E23 Vegetarian Curry Mutton	●	●	●	✗	●	●

FRESH JUICES

		DF	GF	VEG	V	NF	EF
		▼	▼	▼	▼	▼	▼
FJ01	Watermelon Juice	●	●	●	●	●	●
FJ02	Orange Juice	●	●	●	●	●	●
FJ03	Apple Juice	●	●	●	●	●	●

DESSERTS

			DF ▼	GF ▼	VEG ▼	V ▼	NF ▼	EF ▼
	P01	Tau Foo Fa King with Gula Melka	●	●	●	●	●	●
	P02	Tau Foo Fa King with Sugar Syrup	●	●	●	●	●	●
	P03	Sago Pudding	✗	●	●	●	●	●
	P04	Egg Sago Pudding	✗	✗	●	●	●	●
	P05	ABC	✗	●	●	●	★	●
	P06	Pappa ABC Special with Vanilla Ice Cream	✗	●	●	●	★	●
	P11	Pappa ABC Special with Premium Ice Cream [Green Tea / Black Sesame]	✗	●	●	●	★	●
	P07	Banana Split with Ice Cream	✗	✗	●	★	●	★
	P14	Banana Split with Premium Ice Cream [Green Tea / Black Sesame]	✗	✗	●	★	★	★
	P08	Pappa Ice Cream	✗	✗	●	★	●	★
	P15	Pappa Premium Ice Cream [Green Tea / Black Sesame]	✗	✗	●	★	★	★
	P09	Banana Fritters with Vanilla Ice Cream	✗	✗	●	●	●	●
	P12	Banana Fritters with Premium Ice Cream [Green Tea / Black Sesame]	✗	✗	●	●	★	●
	E26	Vanilla / Chocolate / Strawberry Ice Cream	✗	●	●	●	●	●
	E27	Premium Ice Cream [Green Tea / Black Sesame]	✗	●	●	●	★	●

PAPPA SPECIALS

			DF ▼	GF ▼	VEG ▼	V ▼	NF ▼	EF ▼
	PS01	Pappa White Coffee	Hot	✗	●	●	✗	●
	PS05		Iced	✗	●	●	✗	●

PAPPA SPECIALS



			DF	GF	VEG	V	NF	EF	
			▼	▼	▼	▼	▼	▼	
	PS02	Pappa Cham	Hot	✗	●	●	✗	●	●
	PS06	Pappa Cham	Iced	✗	●	●	✗	●	●
	PS03	Pappa Mocha	Iced	✗	●	●	✗	●	●
	PS04	Pappa White Coffee + Jelly	Iced	✗	✗	●	✗	●	●
	PS07	Pappa Cham + Jelly	Iced	✗	✗	●	✗	●	●
	PS08	Pappa Mocha + Ice Cream	Iced	✗	●	●	✗	●	●
	PS09	Longan Milk Honey	Iced	✗	●	●	✗	●	●
	PS10	Lychee Soda	Iced	●	●	●	●	●	●

MALAYSIAN FAVOURITES



			DF	GF	VEG	V	NF	EF
			▼	▼	▼	▼	▼	▼
	MF01	Lychee Grass Jelly	Iced	●	●	●	●	●
	MF02	Fresh Lemon Honey	Hot	●	●	●	●	●
	MF05	Fresh Lemon Honey	Iced	●	●	●	●	●
	MF03	Lemon Tea with Honey	Hot	●	●	●	●	●
	MF04	Red Bean	Iced	✗	●	●	●	●
	MF06	Lemon Tea	Iced	●	●	●	●	●
	MF07	Barley	Iced	✗	✗	●	✗	●
	MF27	Barley	Hot	✗	✗	●	✗	●
	MF08	Barley Grass Jelly	Iced	✗	✗	●	✗	●
	MF09	Organic Soya Milk	Iced	✗	●	●	●	●
	MF28	Organic Soya Milk	Hot	✗	●	●	●	●
	MF10	Soya Milk Grass Jelly	Iced	✗	●	●	●	●
	MF11	Soya Milk + Sesame Ice Cream	Iced	✗	●	●	●	✗

Malaysian Favourites Continued

			DF ▼	GF ▼	VEG ▼	V ▼	NF ▼	EF ▼	
	MF12	Soya Milk Jelly	Iced	✗	✗	●	★	●	★
	MF13	Soya Milk Pudding	Iced	✗	✗	●	★	●	★
	MF14	Soya Milk Pudding + Grass Jelly	Iced	✗	✗	●	●	●	●
	MF15	Teh	Hot	✗	●	●	✗	●	●
	MF19		Iced						
	MF16	Kopi	Hot	✗	●	●	✗	●	●
	MF20		Iced						
	MF17	Kopi O	Hot	●	●	●	●	●	●
	MF21		Iced						
	MF18	Kopi Cham Milo	Hot	✗	✗	●	✗	●	●
MF22	Iced								
	MF23	Milo Dinosaur	Iced	✗	✗	●	✗	●	●
	MF24	Chocolate	Iced	✗	●	●	✗	●	●
	MF30		Hot						
	MF25	Teh + Jelly	Iced	✗	✗	●	✗	●	●
	MF26	Teh C Special	Iced	✗	●	●	✗	●	●
	MF29	Teh O	Hot	●	●	●	●	●	●
	MF31	Milo	Iced	✗	✗	●	✗	●	●
	MF32		Hot						
	MF33	Bandung	Ice Blended	✗	●	●	●	●	●
	MF34	Bandung + Grass Jelly	Ice Blended	✗	●	●	●	●	●

GOURMET TEA

G01 Jasmine Tea

DF ▼	GF ▼	VEG ▼	V ▼	NF ▼	EF ▼
●	●	●	●	●	●

GOURMET TEA

			DF	GF	VEG	V	NF	EF
			▼	▼	▼	▼	▼	▼
G02	Earl Grey		★	●	●	★	●	●
G03	English Breakfast		★	●	●	★	●	●
G04	Chamomile		●	●	●	●	●	●
G05	Peppermint		●	●	●	●	●	●
G06	Green Tea		●	●	●	●	●	●

PAPPA DELICIOUS CONCOCTIONS

			DF	GF	VEG	V	NF	EF
			▼	▼	▼	▼	▼	▼
PD01	Ribena Melon	Ice Blended	●	●	●	●	●	●
PD02	Mango Mania	Ice Blended	●	●	●	●	●	●
PD03	Matcha Rocks	Ice Blended	✘	●	●	●	●	●
PD04	Open Sesame	Ice Blended	✘	●	●	●	✘	●
PD05	Coconut Paradise	Ice Blended	✘	●	●	✘	●	●
PD06	Tropical Lime	Ice Blended	✘	●	●	✘	●	●

OTHERS

			DF	GF	VEG	V	NF	EF
			▼	▼	▼	▼	▼	▼
SD01	Coke		●	!	●	✘	●	●
SD06	Diet Coke		●	!	●	✘	●	●
SD07	Coke Zero		●	!	●	✘	●	●
SD02	Root Beer		●	!	●	✘	●	●
SD03	100 Plus		✘	!	●	✘	●	●
SD04	Sprite		●	!	●	✘	●	●
SD05	Spring Water		●	●	●	●	●	●
SD08	Sparkling Water		●	●	●	●	●	●

ITALIAN COFFEE SELECTION

		DF ▼	GF ▼	VEG ▼	V ▼	NF ▼	EF ▼
IC01/2	Cappuccino	×	●	●	×	●	●
IC03/4	Latte	×	●	●	×	●	●
IC05/6	Flat White	×	●	●	×	●	●
IC07	Espresso	●	●	●	●	●	●
IC08/9	Long Black	●	●	●	●	●	●
IC10/11	Macchiato	×	●	●	×	●	●
IC12/13	Mocha	×	●	●	×	●	●
IC14/15	Chai Latte	×	●	●	×	●	●
IC16	Affogato	×	●	●	×	●	●
IC17	Baby Cino	×	●	●	×	●	●

PLEASE NOTE:

- Due to the vast amount of items used in the kitchen, trace amounts of the allergens cannot be guaranteed to be completely absent from the dishes the customers' order.
- We have included all the main allergens that are commonly affecting the Australian public. Please note, that although we have tried to include all the main allergens, there will still be some allergens that have not been included on this list. Due to the vast amount of allergens that could possibly affect anyone of the public, we are unable to include every single allergen in this list.
- PappaRich has taken due care and diligence in producing this allergen list to the best of our knowledge. Please be sure to inform our staff of any specific allergies (no matter how serious) prior to ordering your meal. Without prior knowledge of your dietary requirements, we will not be able to advise you accordingly.
- If you are particularly sensitive to any type of allergen, please take extra precaution about the food you are consuming.

If you have a particular sensitivity to any allergens that are not listed, or unsure if it is suitable for your dietary requirements, please contact us for further information prior consuming of any of our products. Please enquire with our in-house staff; call our headquarters during business hours or email us at info@papparich.net.au.